

Parts Lists

In this chapter...

- Serial Number Format
- Using the Parts List
- Print Engine Parts
- Options
- Xerox Supplies and Accessories

Chapter 9

Serial Number Format

Changes to Xerox products are made to accommodate improved components as they become available. As improvements are made, part numbers may change from those appearing in this section. To get the latest part, provide the following information when ordering:

- Component's part number
- Product type or model number
- Serial number of the printer

The serial number is found on a label located on the frame of the printer just inside the tray 2 opening. Tray 2 must be removed to see it.

The nine-digit serial number has the following format:

PPP-RSSSSS

PPP = product code, as shown in the following table.

Product	Voltage	Product Code
4500	110 V	PMT
	220 V	PMU
4510	110 V	ART
	220 V	ARU

RSSSSS = Numeric serial number. For the Phaser 4500 the serial number includes all six digits. For the Phaser 4510, the "R" is a revision code (incremented when a major product change occurs) followed by the 5-digit serial number.

For example, a printer having **PMT219638** as its Serial Number:

- Is a 110 V Phaser 4500 Printer
- Has a 219638 serial number

Using the Parts List

The following list explains the conventions and symbols used in the parts lists and parts diagrams.

- **No.:** The callout number from the exploded part diagram.
- **Name/Description:** The name of the part to be ordered and the number of parts supplied per order.
- **Part Number:** The material part number used to order that specific part.
- Parts identified throughout this manual are referenced **PL#.##**; For example, PL3.1.10 means the part is item 10 of Parts List 3.1.
- A black triangle preceding a number followed by a parenthetical statement in an illustrated parts list means the item is a parent assembly, made up of the individual parts called out in parentheses.
- The notation “**with X~Y**” following a part name indicates an assembly that is made up of components X through Y. For example, “1 (with 2~4)” means part 1 consists of part 2, part 3, and part 4.
- An asterisk (*) following a part name indicates the page contains a note about this part.
- The notation (NS) next to a part indicates that particular part is not spared, but contained in a kit or major assembly or not used in the printer.
- The notation “**J1<>J2 and P2**” is attached to a wire harness. It indicates that connector Jack 1 is attached to one end of the wire harness and connector J2 is attached to the other end that is plugged into P2.

Note

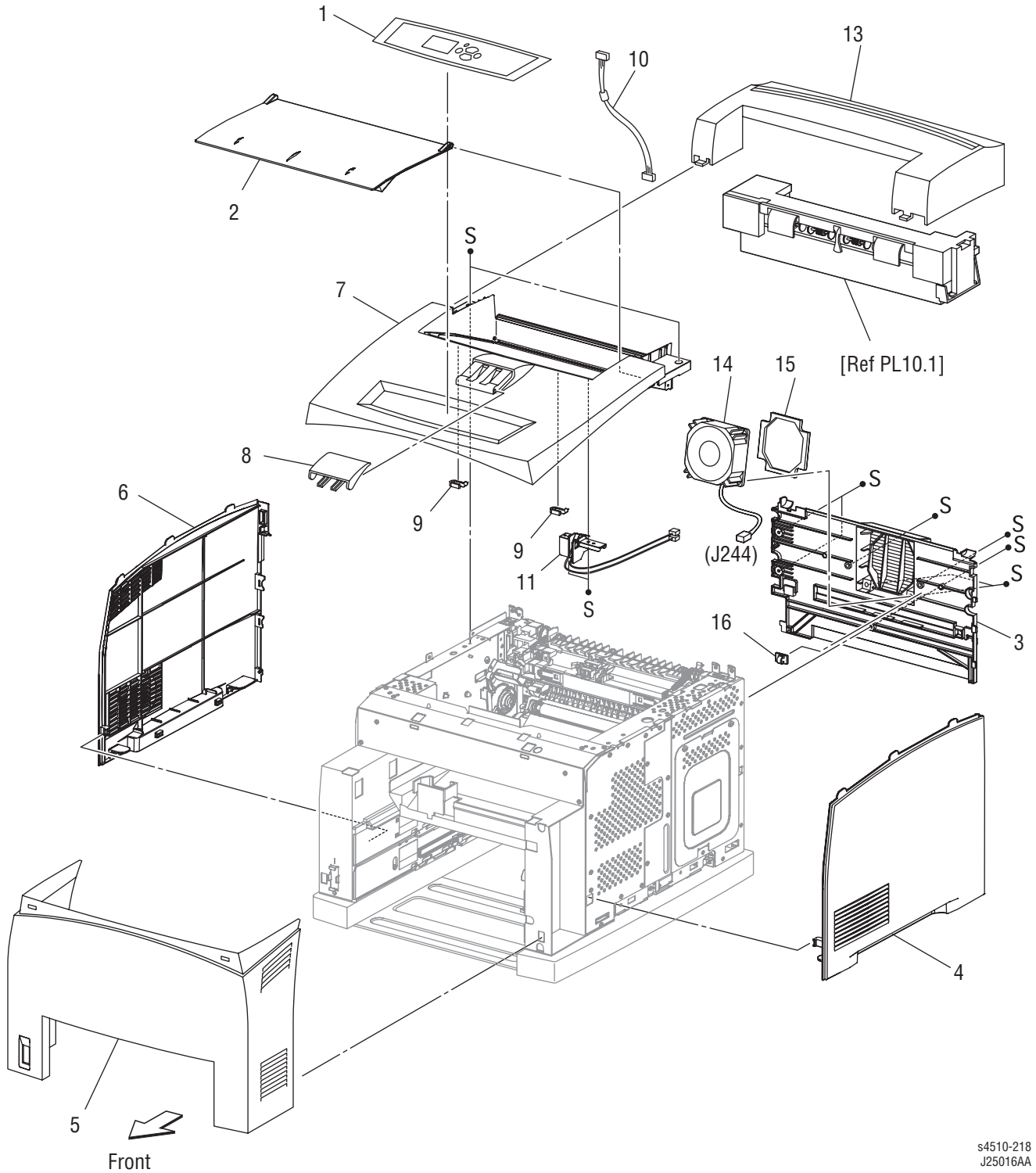
Only parts showing part numbers are available for ordering by support. Parts not showing part numbers are available on the parent assembly.

Abbreviations

Abbreviation	Meaning
C	C-ring
E	E-ring
KL	K-clip
S	Screw

Print Engine Parts

Parts List 1.1 Covers



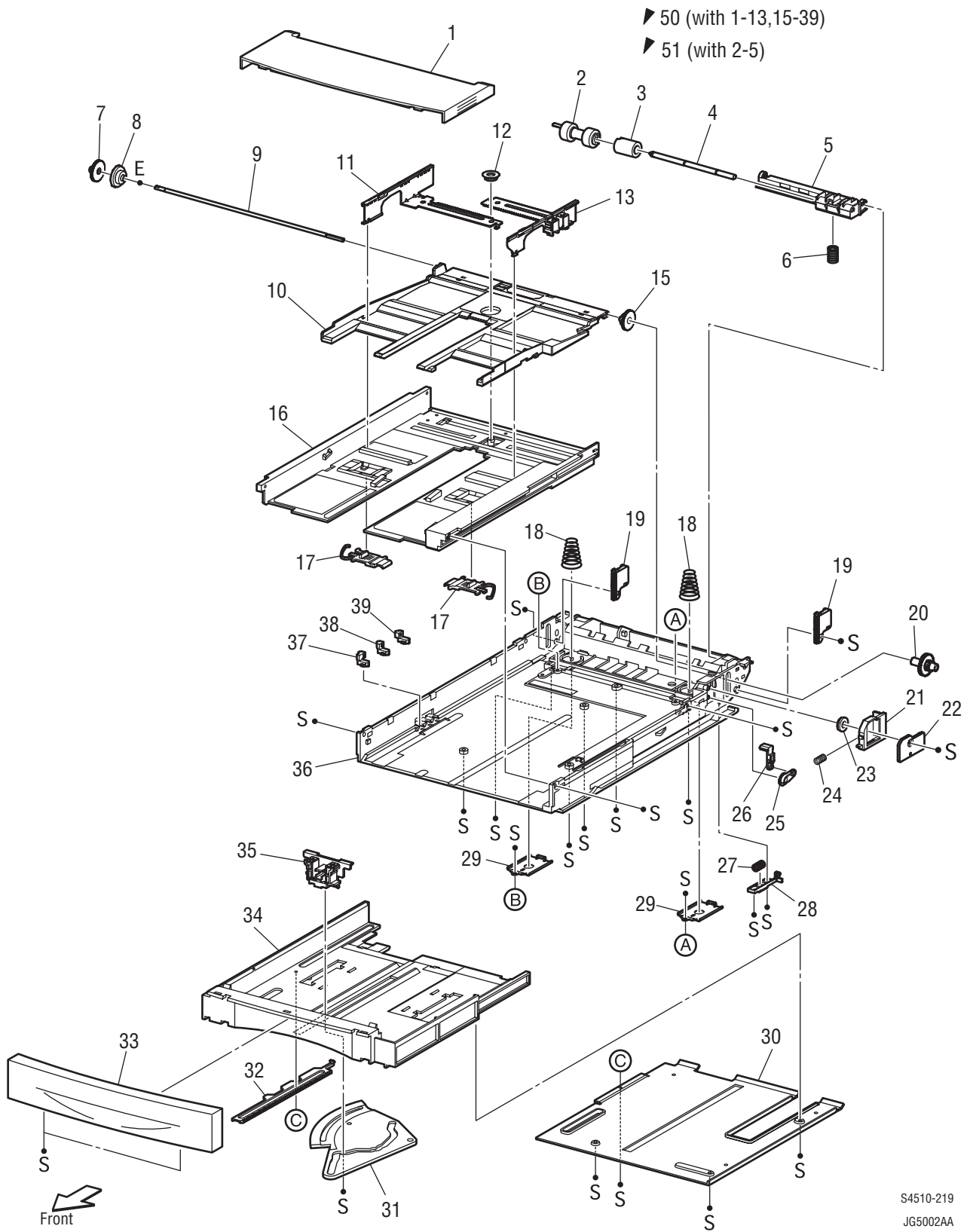
s4510-218
J25016AA

FRU Parts List 1.1 Covers

No.	Name/Description	Part Number
1	OPERATION PANEL (control panel)	P4500: 848K06471 P4510: 848E17860
2	COVER OPEN (top cover)	802E47286
3	COVER REAR	P4500: 604K16463 P4510: 604K37141
4	COVER RIGHT	802E49524
5	COVER FRONT	P4500: 802E63802 P4510: 848K02990
6	COVER LEFT	802E49492
7	COVER TOP ASSY	
8	COVER STOPPER	P4500: 802E61863 P4510: 848E09200
9	STOPPER OPEN	
10	HARNESS ASSY PANEL	962K22731
11	SWITCH I/L ASSY (J144, J411)	P4500 only: 110K11894
13	COVER EXIT 500 (also listed as 10.1)	P4500: 802E47345 P4510: 604K38280
14	FAN MAIN (Phaser 4510) ^a	P4500: see PL 12.1.10 P4510: 127E84180
15	SEAL REAR FAN (Phaser 4510)	
99	KIT TOP COVER (with 7, 9)	P4500: 604K15384 P4510: 604K39040

a The main fan for the Phaser 4500 is listed in PL12.1 on page 9-27.

Parts List 2.1 150-Sheet Paper Cassette



S4510-219
JG5002AA

FRU Parts List 2.1 150-Sheet Paper Cassette

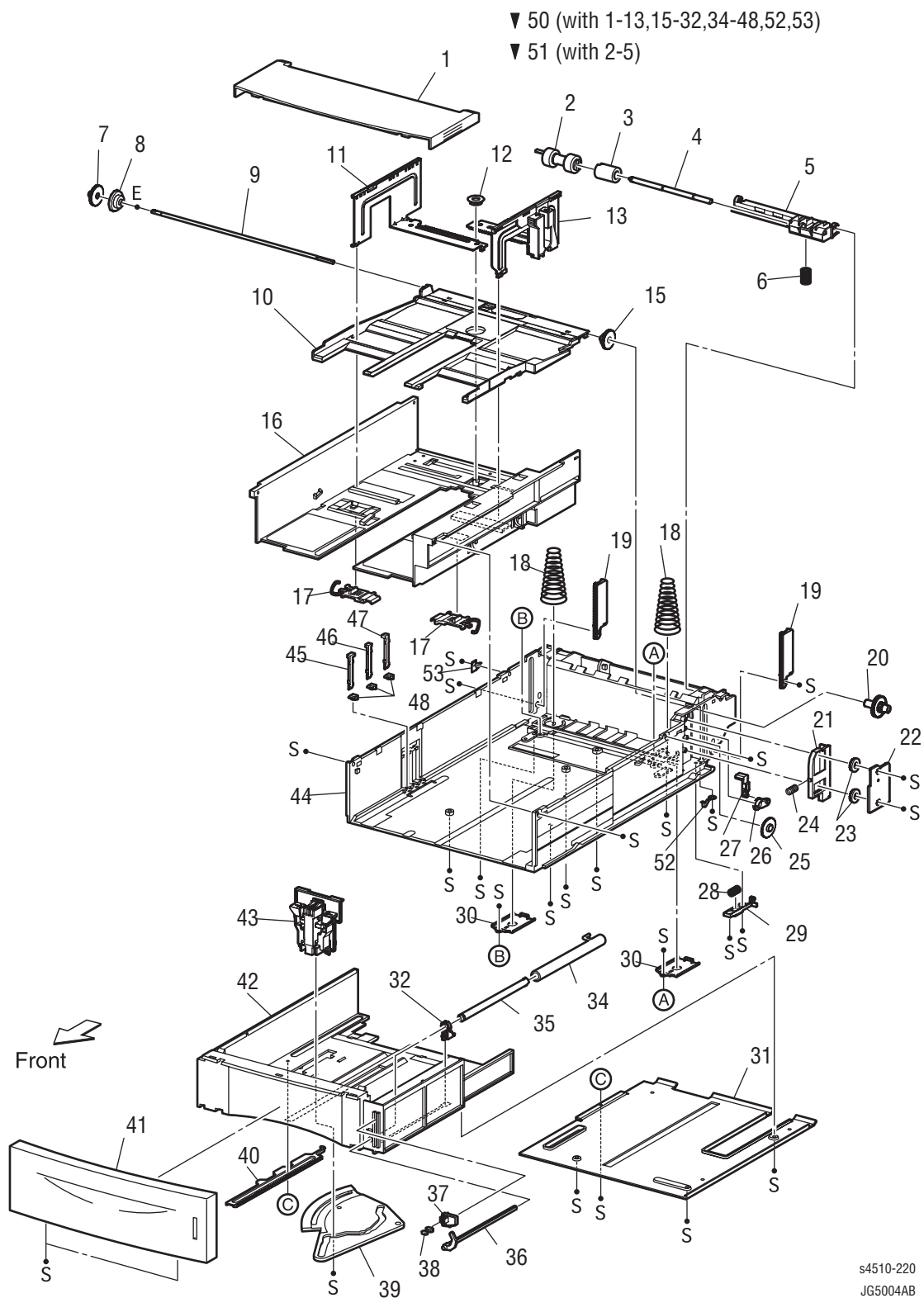
No.	Name/Description	Part Number
1	COVER CST	802E47191
2	ROLL ASSY RETARD (p/o Item 99)	
3	FRICTION CLUTCH	
4	SHAFT RETARD	
5	HOLDER RETARD	
6	SPRING RETARD	P4500: 809E37500 P4510: 809E74400
7	GEAR PB L	
8	GEAR BTM ONEWAY	
9	SHAFT PB	
10	PLATE ASSY BTM (with 14)	
11	GUIDE ASSY SD L150	
12	GEAR PINION	
13	GUIDE ASSY SD R150	
15	GEAR LOCK ONEWAY	
16	HOUSING TOP 150	
17	LOCK EXTENSION	
18	SPRING BTM UP 150	
19	PLATE GEAR LOCK 150	
20	GEAR PB R	
21	RACK BTM LOCK 150	
22	COVER BTM UP 150	
23	GEAR BOTTOM LOCK PINION	
24	SPRING BTM LOCK	
25	GEAR LEVER LOCK	
26	LEVER BTM LOCK	
27	SPRING STOPPER GEAR	
28	STOPPER GEAR	
29	PLATE SUPPORT	
30	COVER EXTENSION	
31	GEAR SECTOR	
32	RACK SIZE	
33	HANDLE EXTENSION 150	
34	HOUSING EXTENSION 150	
35	GUIDE END 150	
36	HOUSING BASE 150	

FRU Parts List 2.1 150-Sheet Paper Cassette (continued)

No.	Name/Description	Part Number
37	LINK SW SIZE1-150	
38	LINK SW SIZE2-150	
39	LINK SW SIZE3-150	
50	150 PAPER CASSETTE (with 1-13, 15-39) ^a	P4500: 084K15355 P4510: 050K58090
51	HOLDER ASSY RETARD (with 2-5)	019K98186
99	Roller Kit (Item 2, Qty. 3)	604K19890

a The Phaser 4510 paper cassette is not interchangeable with the Phaser 4500 paper cassette due to the different retard spring, PL 2.1.6.

Parts List 4.1 550-Sheet Paper Cassette



FRU Parts List 4.1 550-Sheet Paper Cassette

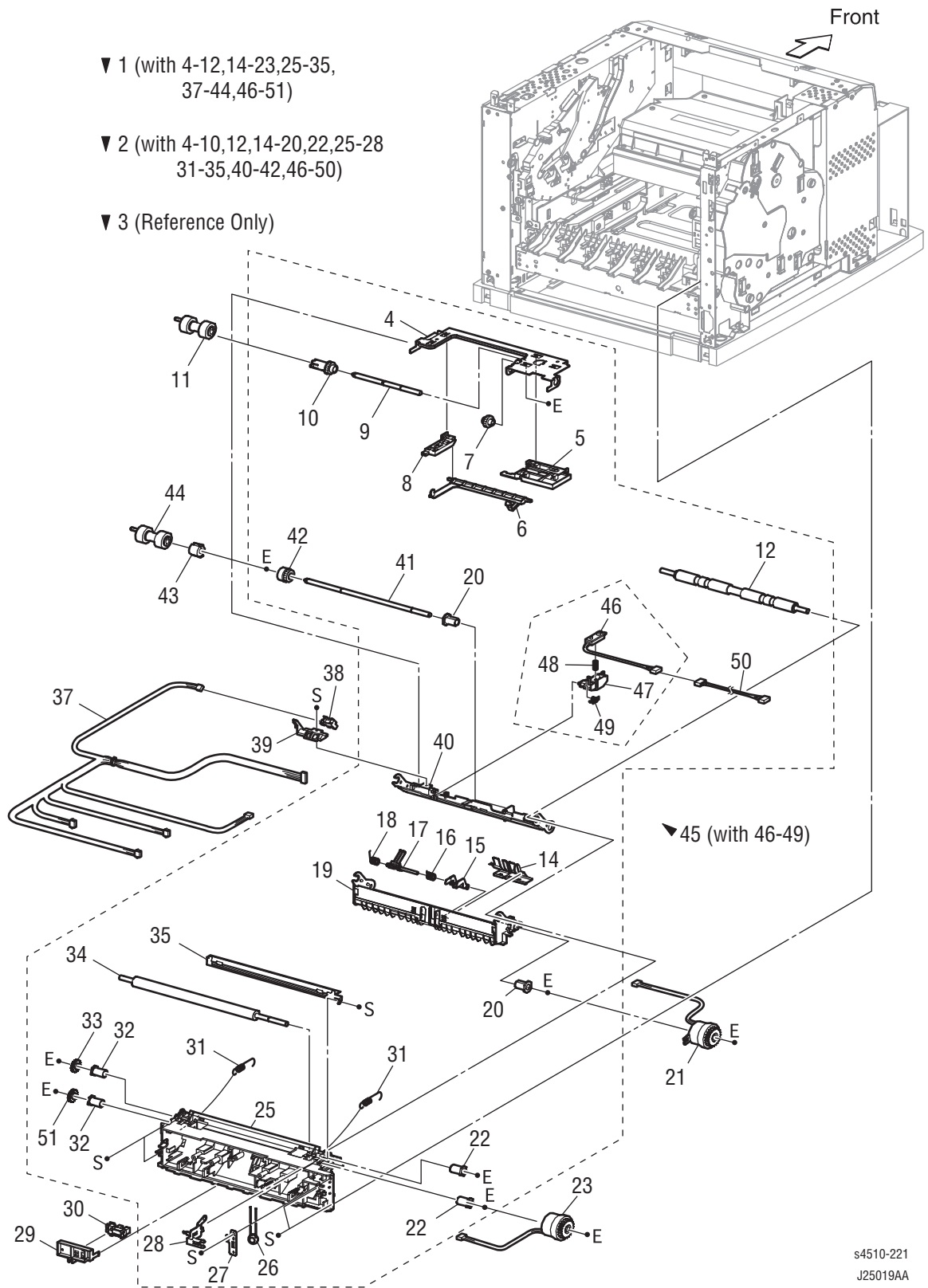
No.	Name/Description	Part Number
1	COVER CST	802E47191
2	ROLL ASSY RETARD (p/o Item 99)	
3	FRICTION CLUTCH	
4	SHAFT RETARD	
5	HOLDER RETARD	
6	SPRING RETARD	P4500: 809E37500 P4510: 809E74400
7	GEAR PB L	
8	GEAR BTM ONEWAY	
9	SHAFT PB	
10	PLATE ASSY BTM	
11	GUIDE ASSY SD L550	
12	GEAR PINION	
13	GUIDE ASSY SD R550	
15	GEAR LOCK ONEWAY	
16	HOUSING TOP 550	
17	LOCK EXTENSION	
18	SPRING BTM UP 550	
19	PLATE GEAR LOCK 550	
20	GEAR PB R	
21	RACK BTM LOCK 550	
22	COVER BTM UP 550	
23	GEAR LOCK PINION	
24	SPRING BTM LOCK	
25	GEAR BTM LOCK	
26	GEAR LEVER LOCK	
27	LEVER BTM LOCK	
28	SPRING STOPPER GEAR	
29	STOPPER GEAR	
30	PLATE SUPPORT	
31	COVER EXTENSION	
32	SUPPORT GUIDE IND	
34	GUIDE INDICATOR 1	
35	GUIDE INDICATOR 2	
36	GUIDE INDICATOR 3	
37	LOW INDICATOR	

FRU Parts List 4.1 550-Sheet Paper Cassette (continued)

No.	Name/Description	Part Number
38	LOW IND FRONT	
39	GEAR SECTOR	
40	RACK SIZE	
41	HANDLE EXTENSION 550	
42	HOUSING EXTENSION 550	
43	GUIDE END 550	
44	HOUSING BASE 550	
45	LINK SW SIZE1-550	
46	LINK SW SIZE2-550	
47	LINK SW SIZE3-550	
48	LINK SW SIZE LOW	
50	550 PAPER CASSETTE ^a (with 1-13, 15-32, 34-48, 51-53)	P4500: 084K15416 P4510: 050K58100
51	HOLDER ASSY RETARD (with 2-5)	019K98186
52	STOPPER BASE R	
53	STOPPER BASE L	
99	Roller Kit (Item 2, Qty. 3)	604K19890

a The Phaser 4510 paper cassette is not interchangeable with the Phaser 4500 paper cassette due to the different retard spring, PL 4.1.6.

Parts List 5.1 150-Sheet Paper Feeder



s4510-221
J25019AA

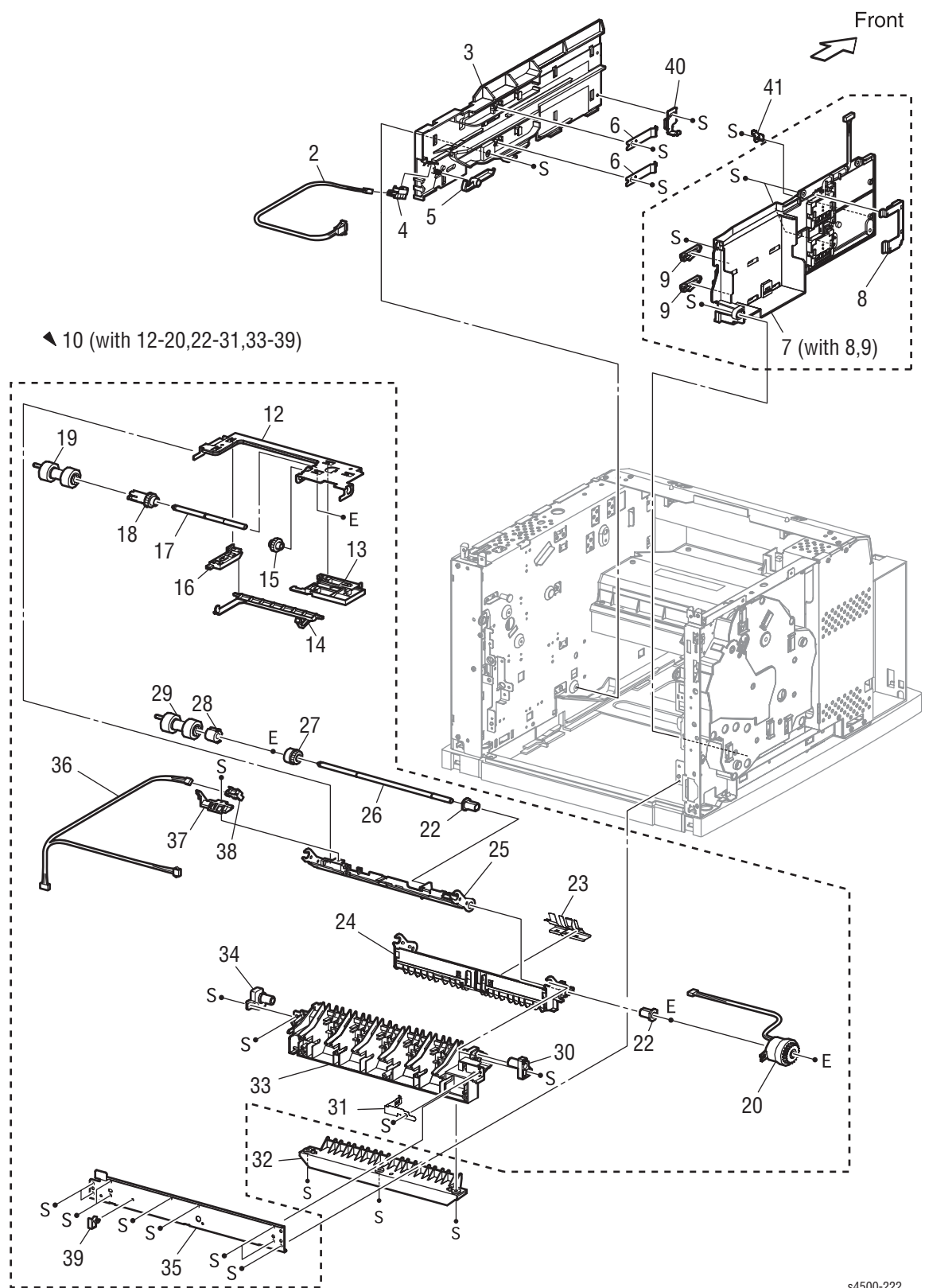
FRU Parts List 5.1 150-Sheet Paper Feeder

No.	Name/Description	Part Number
1	150 FEEDER ASSY (with 4-12, 14-23, 25-35, 37-44, 46-51)	P4500: 604K16683 P4510: 604K37313
2	FDR1 AS SUB 150 A4 (with 4-10, 12, 14-20, 22, 25-28, 31-35, 40-42, 46-50)	
3	CHUTE ASSY FDR 1 (Reference Only) (with 4-10,14-20,40-42)	
4	SUPPORT NUDGER	
5	HOLDER LEFT	
6	ACTUATOR NO PAPER	
7	GEAR IDLER NUDGER	
8	HOLDER RIGHT	
9	SHAFT NUDGER	
10	GEAR NUDGER	059K25270
11	ROLL ASSY NUDGER (part of item 97)	
12	ROLL REGI RUBBER	
14	COVER ACTUATOR	
15	ACTUATOR A (part of registration actuator)	
16	SPRING REGI SNR B	
17	ACTUATOR B (part of registration actuator)	
18	SPRING REGI SNR A	
19	CHUTE BTM ASSY	
20	BEARING NUDGER	013E22571
21	CLUTCH ASSY PH (J242) (feed clutch assembly)	121K28511
22	BEARING REGI LEFT	
23	CLUTCH REGI (J243)	121K28511
25	CHUTE REGI	
26	VARISTER	
27	EARTH PLATE BASE	
28	EARTH PLATE MID	
29	COVER SENSOR	
30	SENSOR REGI (J241)	930W00113
31	SPRING REGI	809E41093
32	BEARING REGI RIGHT	
33	GEAR REGI	807E01290
34	ROLL REGI METAL	
35	CHUTE EARTH REGI (P4500 only)	

FRU Parts List 5.1 150-Sheet Paper Feeder (continued)

No.	Name/Description	Part Number
37	HARNESS ASSY TRAY1 (J245-J240,J241,J242,J243,J244)	
38	SENSOR NO PAPER (P240)	930W00113
39	COVER HARNESS R	
40	CHUTE TOP ASSY	
41	SHAFT FEED	
42	CLUTCH ONEWAY NUDGER	005E16951
43	CLUTCH ONEWAY FEED	005E16941
44	ROLL ASSY FEED (part of item 97)	
45	SENSOR TONER ASSEMBLY (with 46-49)	130K63603
46	SENSOR TONER (J220)	
47	HOLDER-D (part of item 46)	
48	SPRING TONER (part of item 46)	
49	SPRING (part of item 46)	
50	HARNESS ASSY TONER 1 (J22-P221)	962K10313
51	GEAR REGI METAL (WHITE)	807E01280
97	Roller Kit (with 11 or 44, Qty. 3)	604K19890
98	KIT CHUTE REGI (with 25-28)	
99	KIT CHUTE BTM (with 14-19)	

Parts List 7.1 550-Sheet Paper Feeder



s4500-222
JG5015AA

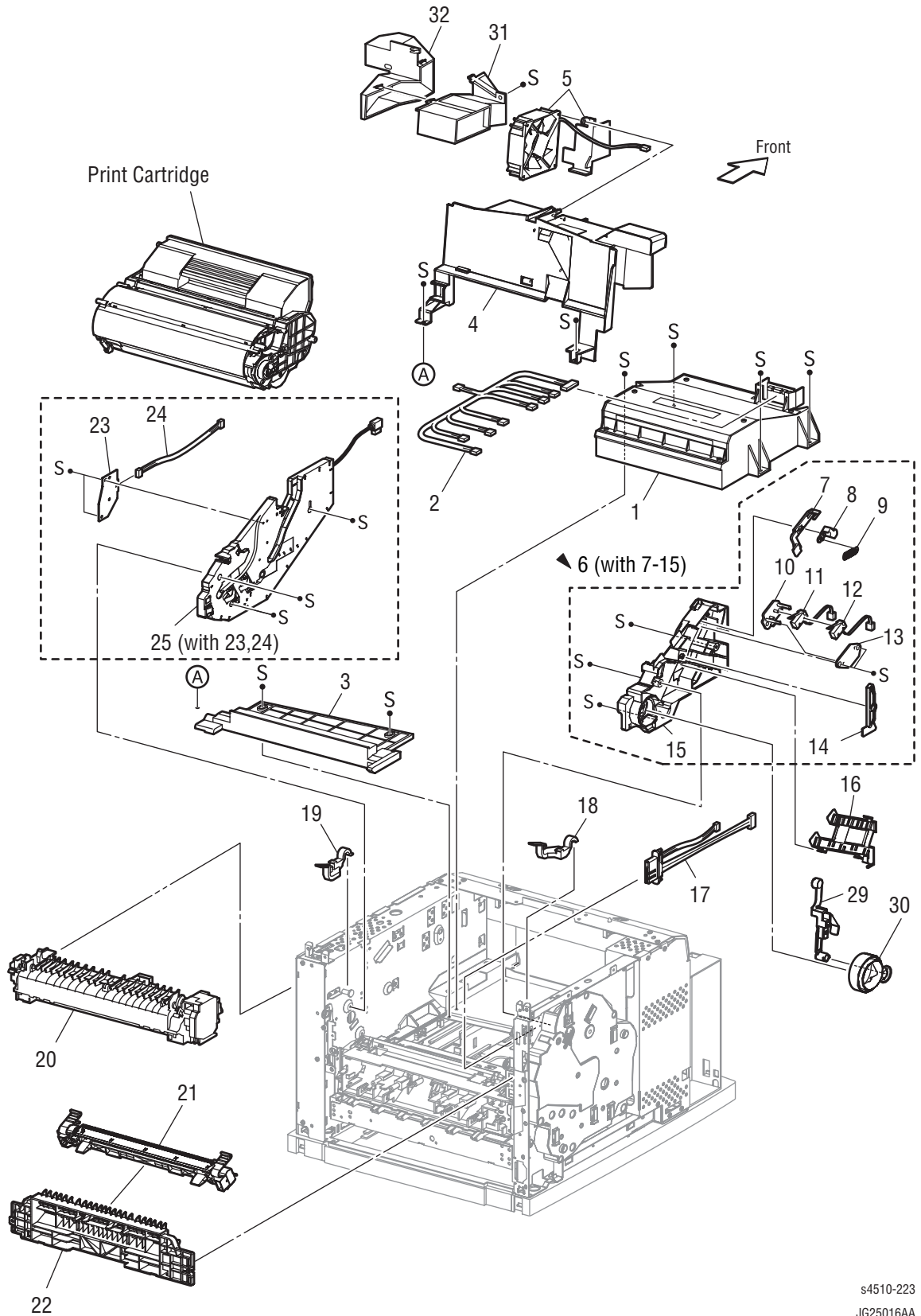
FRU Parts List 7.1 550-Sheet Paper Feeder

No.	Name/Description	Part Number
1	—	
2	HARNESS ASSY LOW1 (J26-J260)	
3	GUIDE TRAY RIGHT	032E18795
4	SENSOR LOW PAPER (P260)	930W00113
5	ACTUATOR	120E21311
6	PLATE CST LOCK	
7	GUIDE TRAY LEFT (with 8,9)	032K96837
8	COVER HARNESS SIZE	
9	LOCK CST L	003E59231
10	550 FEEDER ASSY (with 12-20, 22-31, 33-39)	P4500: 022K66965 P4510: 022K73901
12	SUPPORT NUDGER	
13	HOLDER LEFT	
14	ACTUATOR NO PAPER	
15	GEAR IDLER NUDGER	
16	HOLDER RIGHT	
17	SHAFT NUDGER	
18	GEAR NUDGER	059K25270
19	ROLL ASSY NUDGER (part of item 99)	
20	CLUTCH ASSY PH (J247)	121K28511
22	BEARING NUDGER	013E22571
23	COVER ACTUATOR	
24	CHUTE BTM	
25	CHUTE TOP ASSY	
26	SHAFT FEED	
27	CLUTCH ONEWAY NUDGER	005E16951
28	CLUTCH ONEWAY FEED	005E16941
29	ROLL ASSY FEED (Part of item 99)	
30	HOLDER PIVOT LEFT	
31	EARTH PLATE	

FRU Parts List 7.1 550-Sheet Paper Feeder (continued)

No.	Name/Description	Part Number
32	CHUTE 550 LOWER	
33	CHUTE OUT	
34	HOLDER PIVOT RIGHT	
35	PLATE TIE	
36	HARNESS ASSY TRAY2 (J248-J246, P247)	
37	COVER HARNESS R	
38	SENSOR NO PAPER (P246)	930W00113
39	CLAMP-10V0	
40	STOPPER TRAY R	003E59510
41	STOPPER TRAY L	003E59501
99	FEED ROLLER KIT (with 19 or 29, qty. 3)	604K19890

Parts List 8.1 Xerographics



s4510-223
JG25016AA

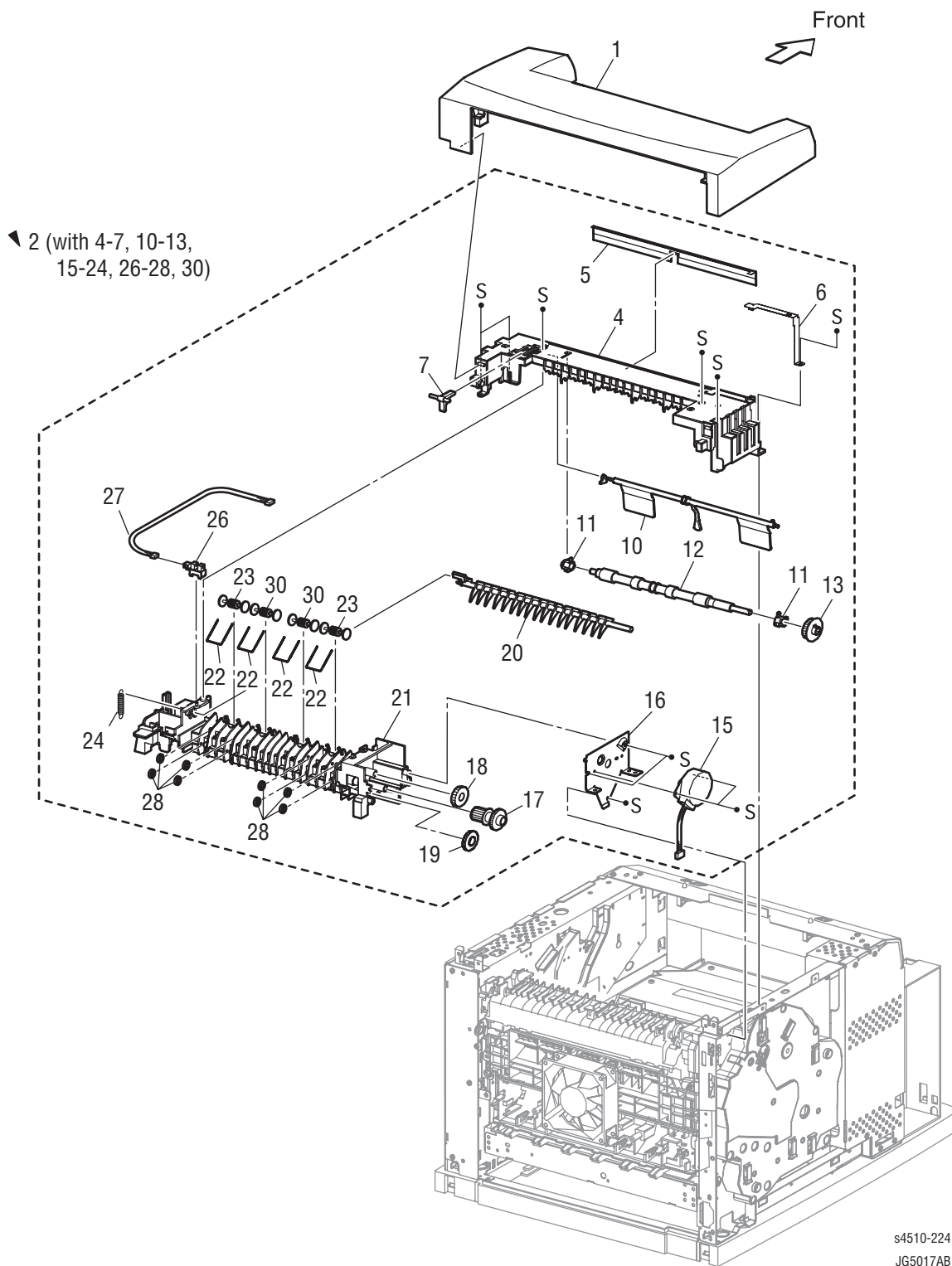
FRU Parts List 8.1 Xerographics

No.	Name/Description	Part Number
1	ROS ASSY (Laser Unit) (J131,P140,P160,P170)	P4500: 084K13156 P4510: 062K18170
2	HARNESS ASSY ROS (J13, J14, J16, J17-P131, J140, P141, J160, J170)	
3	SHIELD PLATE ROS	
4	DUCT FRONT	
5	FAN SUB (J270)	127K39391
6	GUIDE ASSY CRU L (with 7-15)	P4500: 032K97111 P4510: 032K98870
7	GUIDE SL (part of item 6)	
8	SPACER SS (part of item 6)	
9	SPRING SL (part of item 6)	
10	HOLDER I/L SW1 (part of item 6)	
11	INTERLOCK S/W 24 V (J45) (part of item 6)	
12	INTERLOCK S/W 5 V (part of item 6)	
13	HOLDER I/L SW2 (part of item 6)	
14	LEVER GUIDE (Guide Lever) (part of item 6)	
15	GUIDE CRU LEFT (part of item 6)	
16	COVER GUIDE CRU	
17	HARNESS ASSY FUSER 110V (J4647-J46, J47)	P4500: 962K08242 P4510: 962K45770
	HARNESS ASSY FUSER 220V (J4647-J46, J47)	P4500: 962K12942 P4510: 962K45782
18	LEVER FUSER LH	011E13362
19	LEVER FUSER RH	P4500: 011E13373 P4510: 011E19070
20	FUSER ASSY 110V	P4500: 604K28531 P4510: 604K37338
	FUSER ASSY 220V	P4500: 604K28541 P4510: 604K37358
21	BTR ASSY (transfer roller assembly)	P4500: 802K49746 P4510: 802K96322
22	CHUTE TRANSFER	054K26071
23	PWBA ASSY ANT (P150) (part of item 25)	
24	HARNESS ASSY ANT (J15-J150) (part of item 25)	
25	GUIDE ASSY CRU R (J31) (with 23, 24)	032K97012
29	LEVER LINK	012K94352
30	LINK GEAR 3	012E10561

FRU Parts List 8.1 Xerographics (continued)

No.	Name/Description	Part Number
31	VACUUM DUCT R	P4510 only: 054E27470
32	VACUUM DUCT L	P4510 only: 054E27460

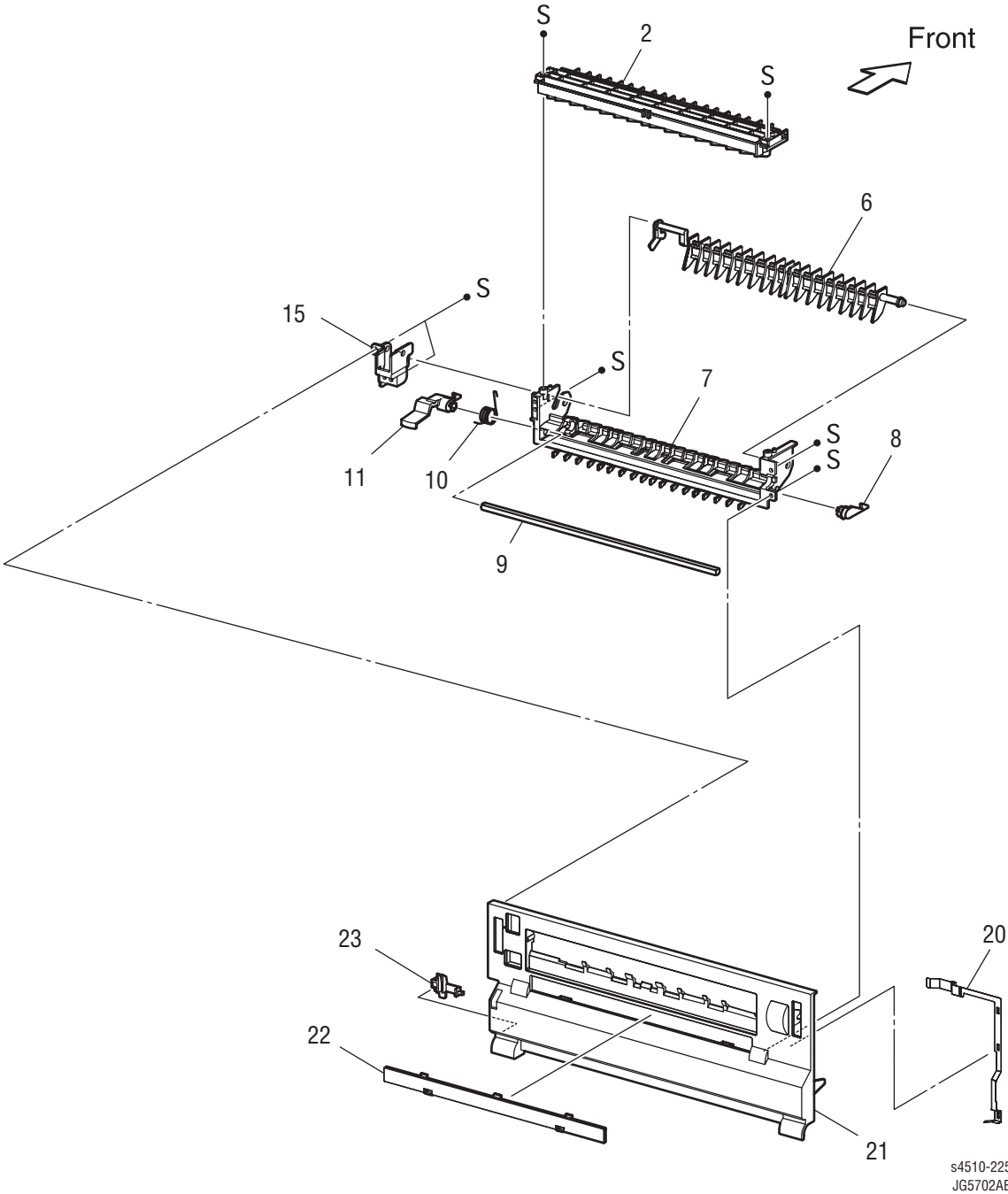
Parts List 10.1 Paper Exit (1/2)



FRU Parts List 10.1 Paper Exit (1/2)

No.	Name/Description	Part Number
1	COVER EXIT 500	P4500: 802E47345 P4510: 848E05030
2	500 EXIT ASSY (with 4-7, 10-13, 15-24, 26-28, 30)	P4500: 084K18472 P4510: 054K33661
4	CHUTE UP EXIT	
5	ELIMINATOR EXIT	
6	EARTH PLATE EXIT	
7	LINK GATE OCT (stacker gate link)	
10	ACTUATOR FULL STACK (p/o 31)	
11	BEARING EXIT	
12	ROLL EXIT	
13	GEAR 21	
15	MOTOR ASSY EXIT (J103)	P4500: 127K36931 P4510: 127K51020
16	BRACKET MOTOR EXIT	
17	GEAR 16/49	
18	GEAR 25-2	
19	GEAR 25-1	
20	GATE OCT EXIT (stacker exit gate)	
21	CHUTE LOW EXIT	
22	SPRING PINCH EXIT	
23	ROLLER PINCH EXIT (p/o 31)	
24	SPRING GATE OCT (stacker gate spring)	
26	SENSOR FULL STACK (P290)	930W00113
27	HARNESS ASSY EXIT SNR (J29-J290)	
28	ROLLER EXIT 500	
30	ROLL PINCH EXIT OCT (stacker exit pinch roller - p/o 31)	
31	CORRUGATION KIT (WITH 10, 23 qty2, 30 qty2)	P4500 only: 604K28750

Parts List 10.2 Paper Exit (2/2)

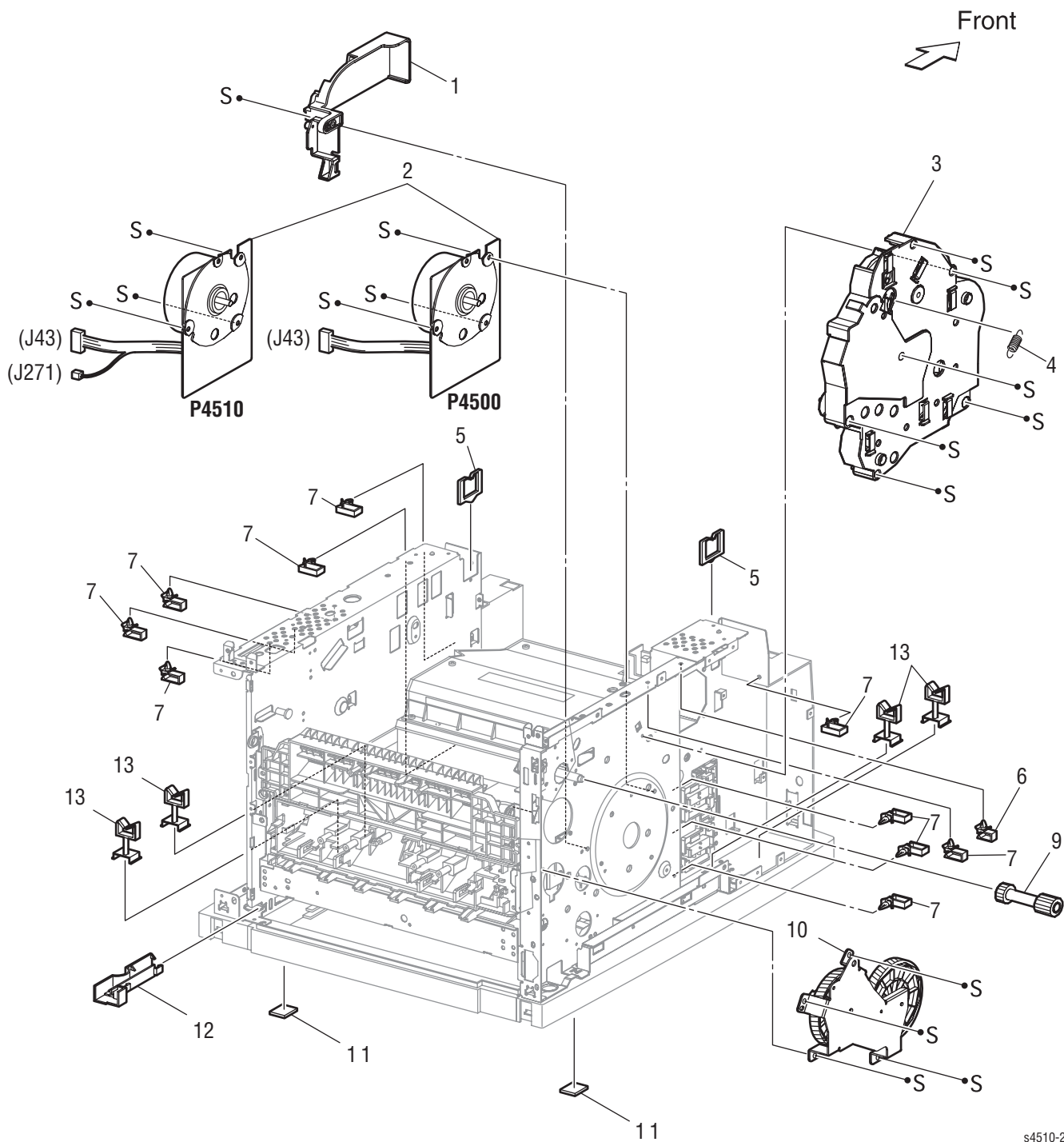


s4510-225
JG5702AB

FRU Parts List 10.2 Paper Exit (2/2)

No.	Name/Description	Part Number
2	CHUTE UP FU	
6	GATE FU	
7	CHUTE LOW FU	
8	LEVER LATCH LEFT	
9	PIPE LATCH LEFT	
10	SPRING LATCH FU	
11	LEVER LATCH RIGHT	
15	LEVER GATE HOLDER	
20	EARTH PLATE FU	
21	COVER REAR 500	
22	COVER DUP	802E48403
23	STOPPER FSR	003E59201
98	COVER REAR 500 (with 2-22)	084K18455

Parts List 11.1 Frame and Drive

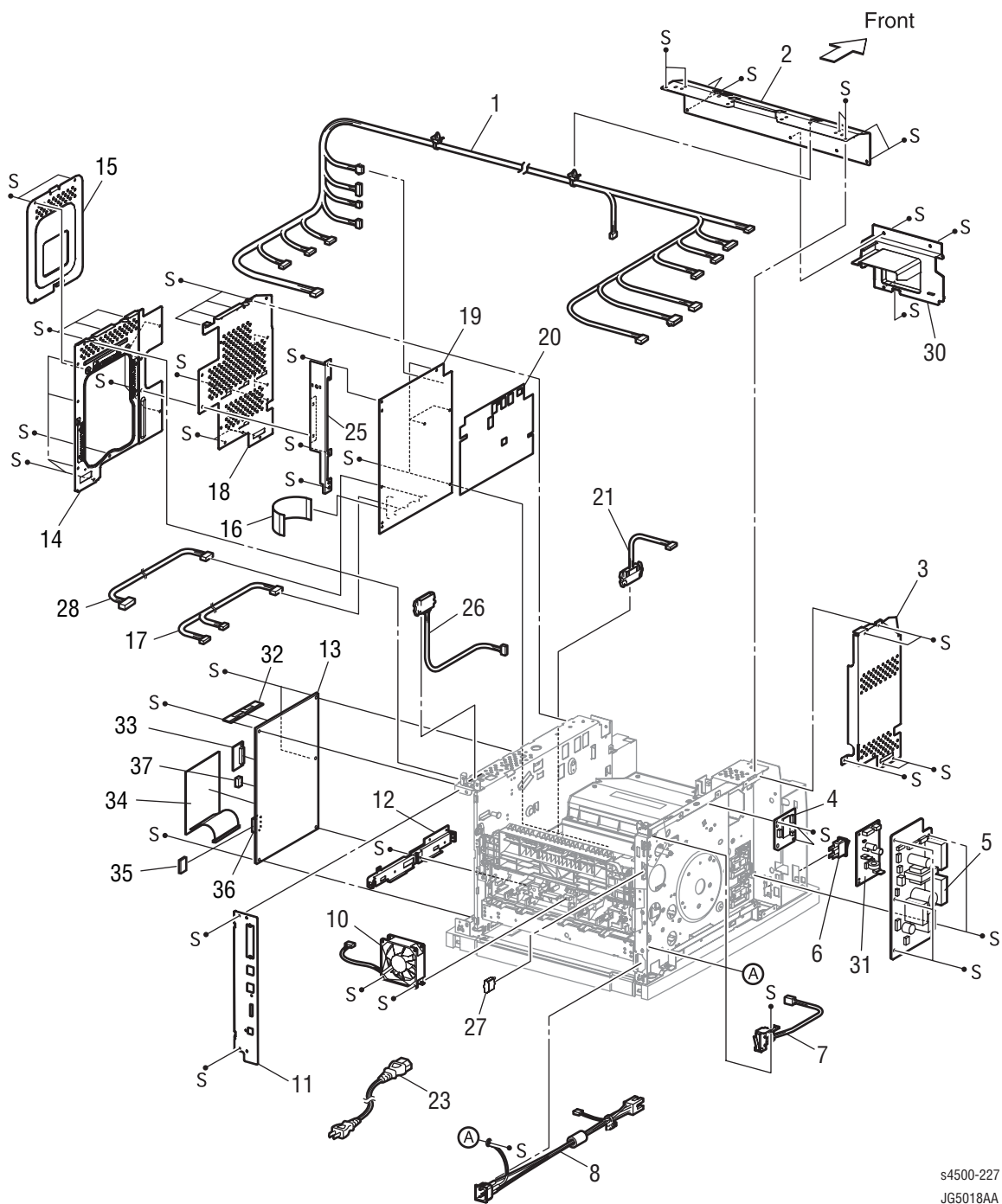


s4510-226
J25020AA

PL11.1 Frame and Drive

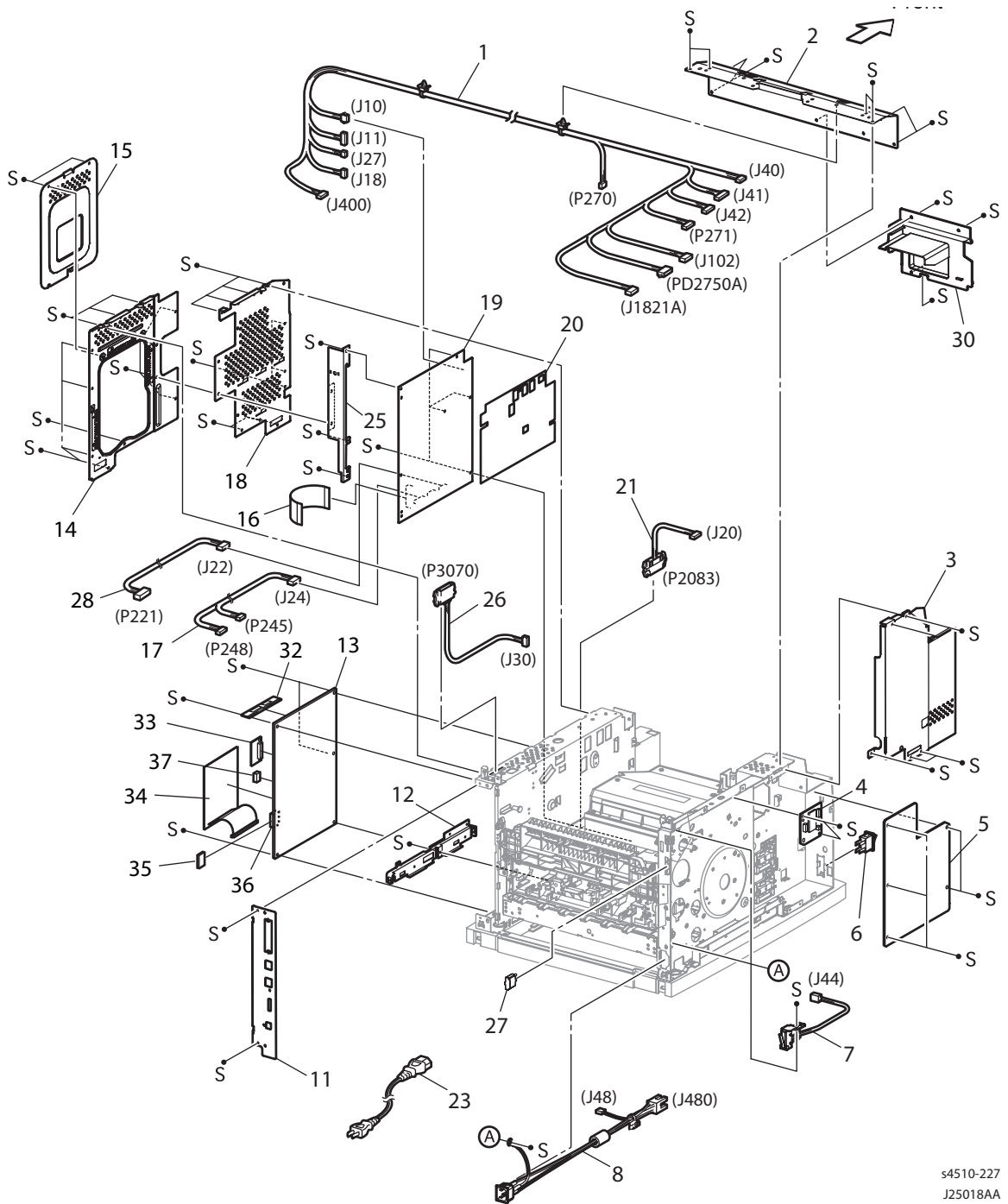
No.	Name/Description	Part Number
1	MOTOR COVER	
2	MAIN MOTOR (J43)	P4500: 127K36824 P4510: 127K46132
3	GEAR ASSY HOUSING (with 4)	P4500: 604K16670 P4510: 604K38610
4	SPRING RELEASE (part of item 3)	
5	CLAMP EDGE	
6	CLAMP-5 V0	
7	CLAMP-10V0	
8	CLAMP-EDGE	
9	GEAR 9	807E02560
10	GEAR ASSY PLATE	007K87753
11	FOOT 550	
12	GUIDE HARNESS R	
13	CLAMP-RWSH	

Parts List 12.1 Electrical (P4500)



s4500-227
JG5018AA

Parts List 12.1 Electrical (P4510)



s4510-227
J25018AA

PL12.1 Electrical

No.	Name/Description	Part Number
1	HARNESS ASSY LVPS (J10, J11, J18, J27, CNPOW, J141-J42, J41, J1821, P270, J102, P2750, J40, P142, P144, J411, J400)	
2	PLATE TIE FRONT	
3	SHIELD PLATE LVPS	
4	PWBA EXIT MOTOR	160K91992
5	LVPS 110 V	P4500: 105K20395 P4510: 105K22181
	LVPS 220 V	P4500: 105K20404 P4510: 105K22191
6	POWER SWITCH	110K11570
7	INTERLOCK S/W REAR (J44)	P4500: 110K11624 P4510: 110K14750
8A	HARNESS ASSY AC 110V (J48, J480)	
8B	HARNESS ASSY AC 220V (J48, J480)	
10	FAN MAIN (J244) ^a	P4500: 127E83610 P4510: see PL 1.1.14
11	PANEL REAR	
12	BRACKET HANDLE R	
13	Image Processor PWBA (ESS)	P4500: 960K35050 P4510: 960K41801
14	SHIELD ASSY ESS	
15	SHIELD ASSY WINDOW	
16	FFC ASSY ESS (P28-CNVD)	962K13460
17	HARNESS ASSY CHUTE (J24-P245, P248)	
18	SHIELD PLATE HVPS	
19	HVPS/MCU 110 V	P4500: 675K30892 P4510: 675K44385
	HVPS/MCU 220 V	P4500: 675K30902 P4510: 675K44395
20	MYLAR HVPS	
21	HARNESS ASSY FDR1 (J20-P2083) (feeder harness 1)	

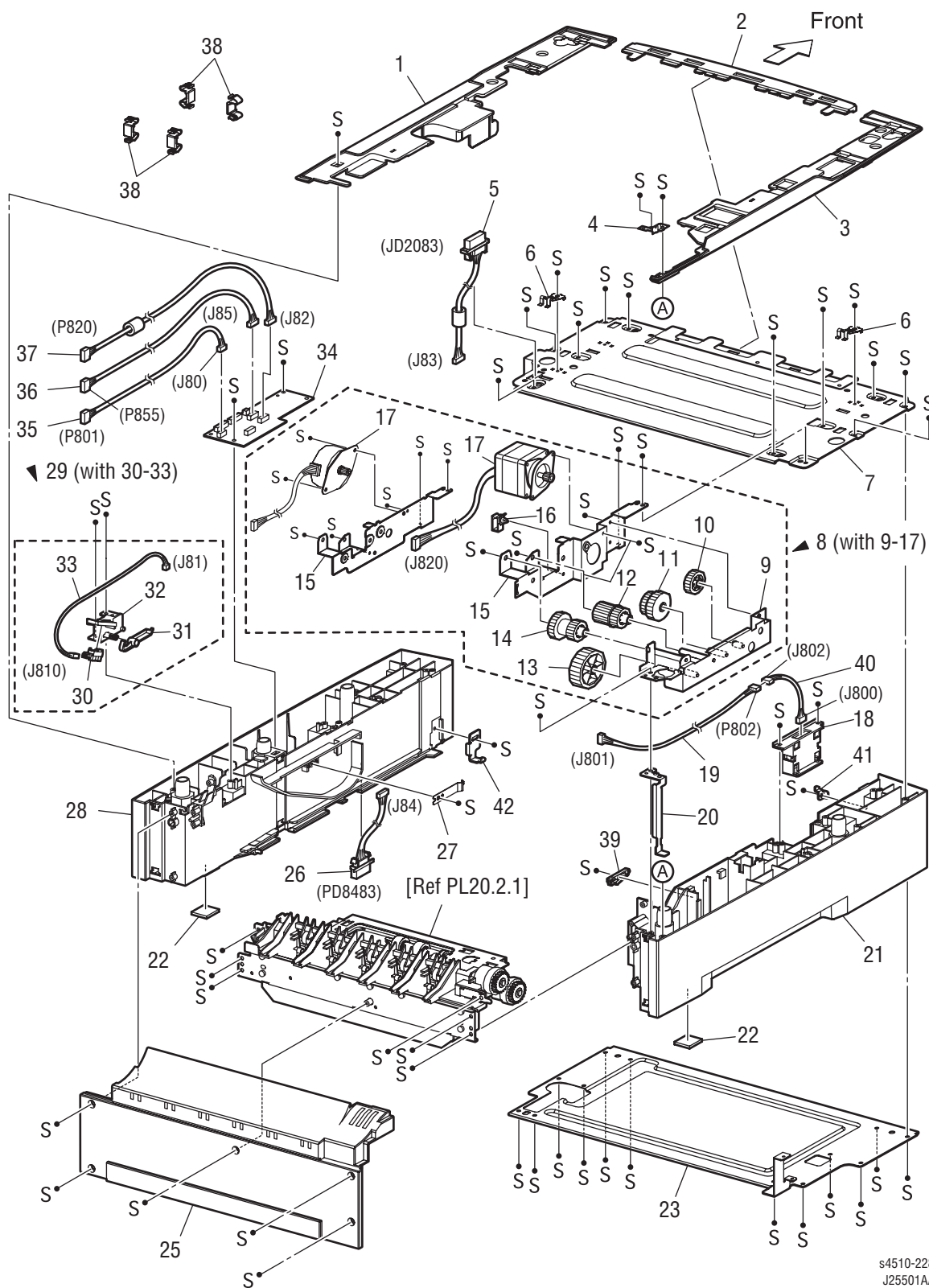
a The main fan for the Phaser 4510 is listed in PL 1.1 on page 9-4.

PL12.1 Electrical (continued)

No.	Name/Description	Part Number
23	POWER CORD, NA 125V, 15A	117E29520
	POWER CORD, EURO	117E29500
	POWER CORD, AUSTRALIA	117E29490
	POWER CORD, SWISS	117E35050
	POWER CORD, DENMARK	117E29460
	POWER CORD, CHINA	117E35030
	POWER CORD, ARGENTINA	117E35040
	POWER CORD, UK 240V	117E29510
25	BRACKET SHIELD HVPS	
26	HARNESS ASSY OCT 1 (J30-P3070) (stacker harness 1)	
27	CAP CONNECTOR-DRAWER	
28	HARNESS ASSY TONER 2 (J22-P221)	
30	DUCT (Upper Duct)	054E23162
31	DC-DC converter	P4500 only: 105K20441
32	64 MB RAM DIMM	P4500: 133K27720 P4510: NS
	128 MB RAM DIMM	P4500: 137E24210 P4510: 133K27760
	256 MB RAM DIMM	P4500: 237E23790 P4510: 237E24070
33	FLASH Memory	P4500: 237E23840 P4510: 237E24090
34	HARD DRIVE ASSY	P4500: 121K45130 P4510: 121K45280
35	CONFIG CARD B TO N	P4500: 069E00450 P4510: 069E00530
36	CONFIG CARD BASE	P4500: 069E00440 P4510: 069E00540
37	NVRAM DEVICE	P4500: 237E23700 P4510: 237E24080

Options

Parts List 20.1 550-Sheet Paper Feeder (1/2)



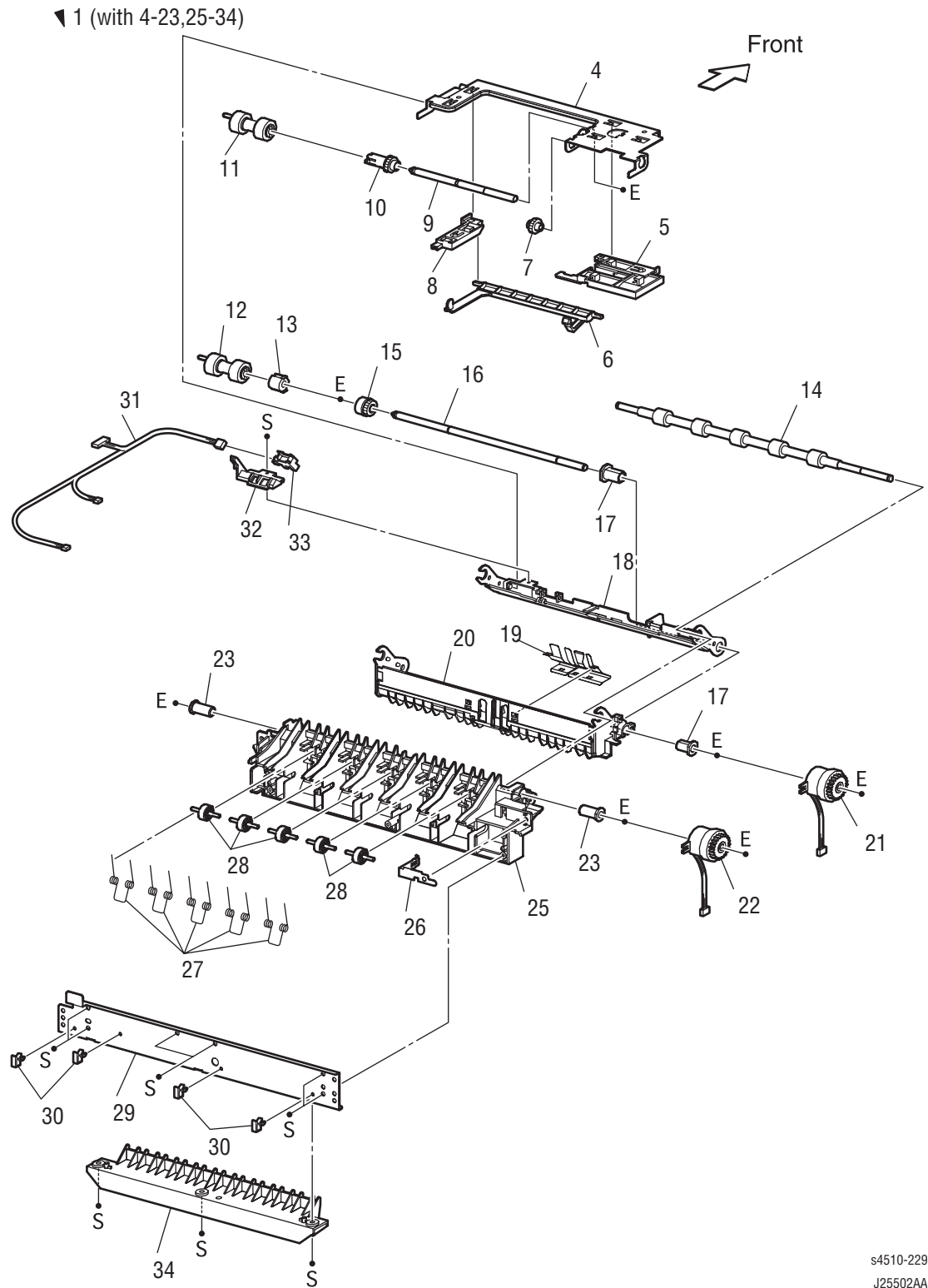
Parts List 20.1 550-Sheet Paper Feeder (1/2)

No.	Name/Description	Part Number
1	COVER RIGHT PLATE	
2	COVER FRONT	
3	COVER LEFT PLATE	
4	EARTH PLATE	
5	HARNESS ASSY FDR2 (J83-JD2083) (feeder harness 2)	
6	SPRING EARTH TOP	
7	FRAME TOP ASSY	
8	DRIVE ASSY OPT FDR (with 9-17)	P4500: 007K87655 P4510: 007K94810
9	BRACKET ASSY DRIVE	
10	GEAR OPT FDR2	
11	GEAR OPT FDR3	
12	GEAR OPT FDR4	
13	GEAR OPT FDR5	
14	GEAR OPT FDR6	
15	PLATE FEEDER DRIVE	
16	CLAMP-5 V0	
17	MOTOR FEEDER (J820)	
18	OPT ASSY SIZE (J800) (paper size switch assembly)	110K11635
19	HARNESS ASSY SIZE FDR1 (P802-J801)	
20	PLATE EARTH 550	
21	FRAME CVR L550	
22	FOOT	
23	FRAME BASE FRONT	
25	COVER RE550	
26	HARNESS ASSY FDR5 (J84-PD8483) (feeder harness 5)	
27	PLATE CST LOCK	
28	FRAME CVR R550	
29	HLD LOW PAPER ASSY (P810) (with 30-33)	019K98503
30	SENSOR LOW PAPER (P810)	930W00113

Parts List 20.1 550-Sheet Paper Feeder (1/2) (continued)

No.	Name/Description	Part Number
31	ACTUATOR LOW PAPER	
32	HOLDER LOW PAPER	
33	HARNESS LOW PAPER (J81-J810)	
34	PWBA FEEDER 550	P4500: 160K86724 P4510: 960K26411
35	HARNESS ASSY SIZE FDR2 (J80-J801)	
36	HARNESS ASSY CLSNR2 (J85-P855)	
37	HARNESS ASSY FDR MOT (J82-P820)	
38	JOINT FEEDER	113E36900
39	LOCK CST L	003E59231
40	HARNESS ASSYSIZE FDR3 (J802-J800) p/o 18	
41	STOPPER TRAY L	003E59501
42	STOPPER TRAY R	003E59510
99	550 DECK ASSY (without tray)	P4500: 084K24570 P4510: 084K25804

Parts List 20.2 550-Sheet Paper Feeder (2/2)

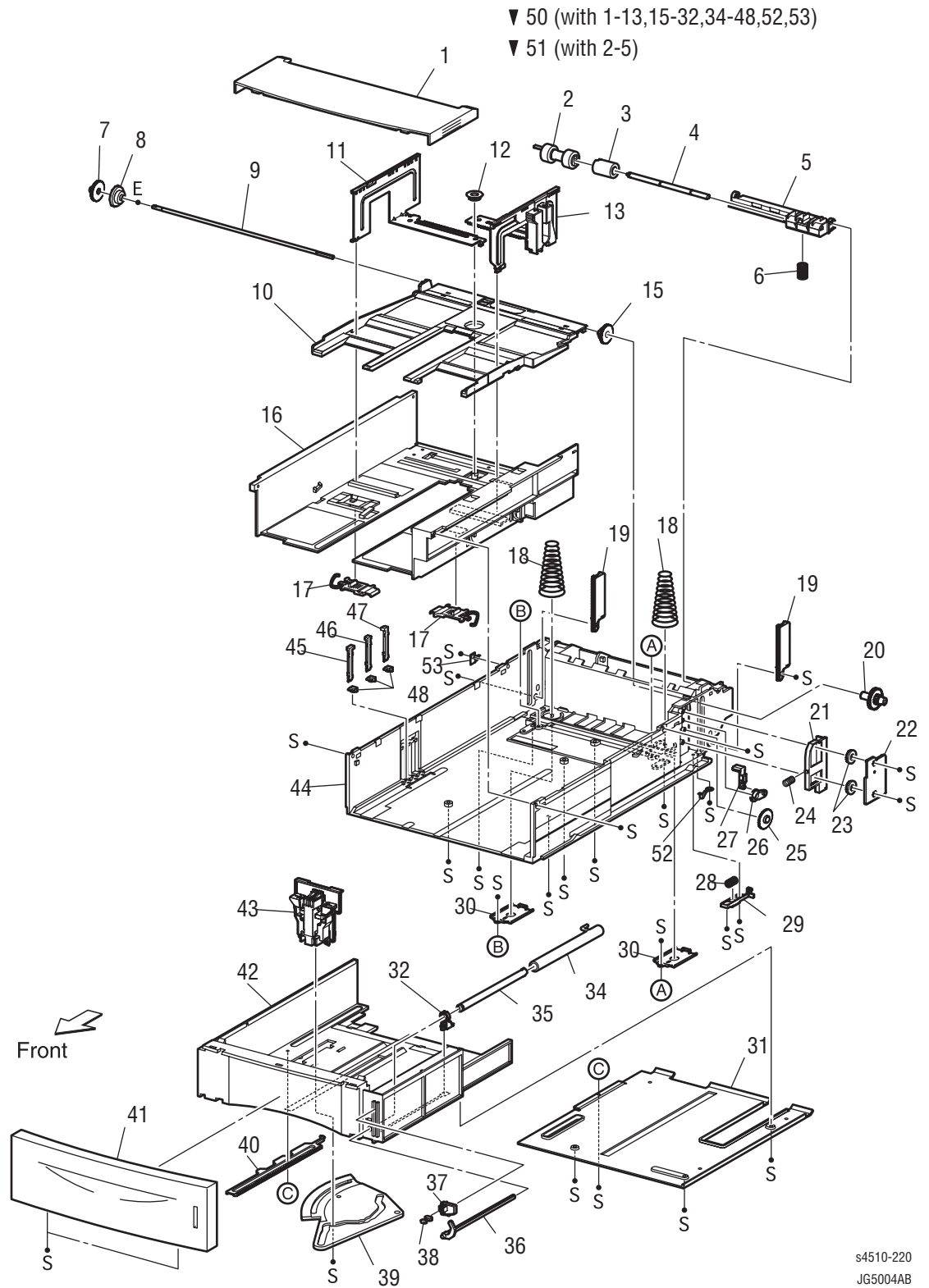


s4510-229
J25502AA

Parts List 20.2 550-Sheet Paper Feeder (2/2)

No.	Name/Description	Part Number
1	550 FEEDER OPTION (with 4-23, 25-34)	P4500: 022K66125 P4510: 022K74442
4	SUPPORT NUDGER	
5	HOLDER LEFT	
6	ACTUATOR NO PAPER	
7	GEAR IDLER NUDGER	
8	HOLDER RIGHT	
9	SHAFT NUDGER	
10	GEAR NUDGER	059K25270
11	ROLL ASSY NUDGER (part of 99)	
12	ROLL ASSY FEED (part of 99)	
13	CLUTCH ONEWAY FEED	005E16941
14	ROLL ASSY TURN	
15	CLUTCH ONEWAY NUDGER	005E16951
16	SHAFT FEED	
17	BEARING NUDGER	013E22571
18	CHUTE TOP ASSY	
19	COVER ACTUATOR	
20	CHUTE BTM	
21	CLUTCH ASSY PH (J853) (feed clutch)	121K28511
22	CLUTCH PR-REGI (J854) (turn roller clutch)	121K28511
23	BEARING FEEDER	
25	CHUTE OUT	
26	SPRING EARTH (Ground Spring)	
27	SPRING PINCH TURN	
28	ROLL PINCH TURN	
29	PLATE TIE	
30	CLAMP-5 V0	
31	HARNESS ASSY CLSNR1 (J855-J852, P853, P854)	
32	COVER HARNESS R	
33	SENSOR NO PAPER (P852)	930W00113
34	CHUTE 550 LOWER	
99	Roller Kit (with 11 or 12, qty. 3)	604K19890

Parts List 20.3 Optional 550-Sheet Paper Cassette



Parts List 20.3 Optional 550-Sheet Paper Cassette

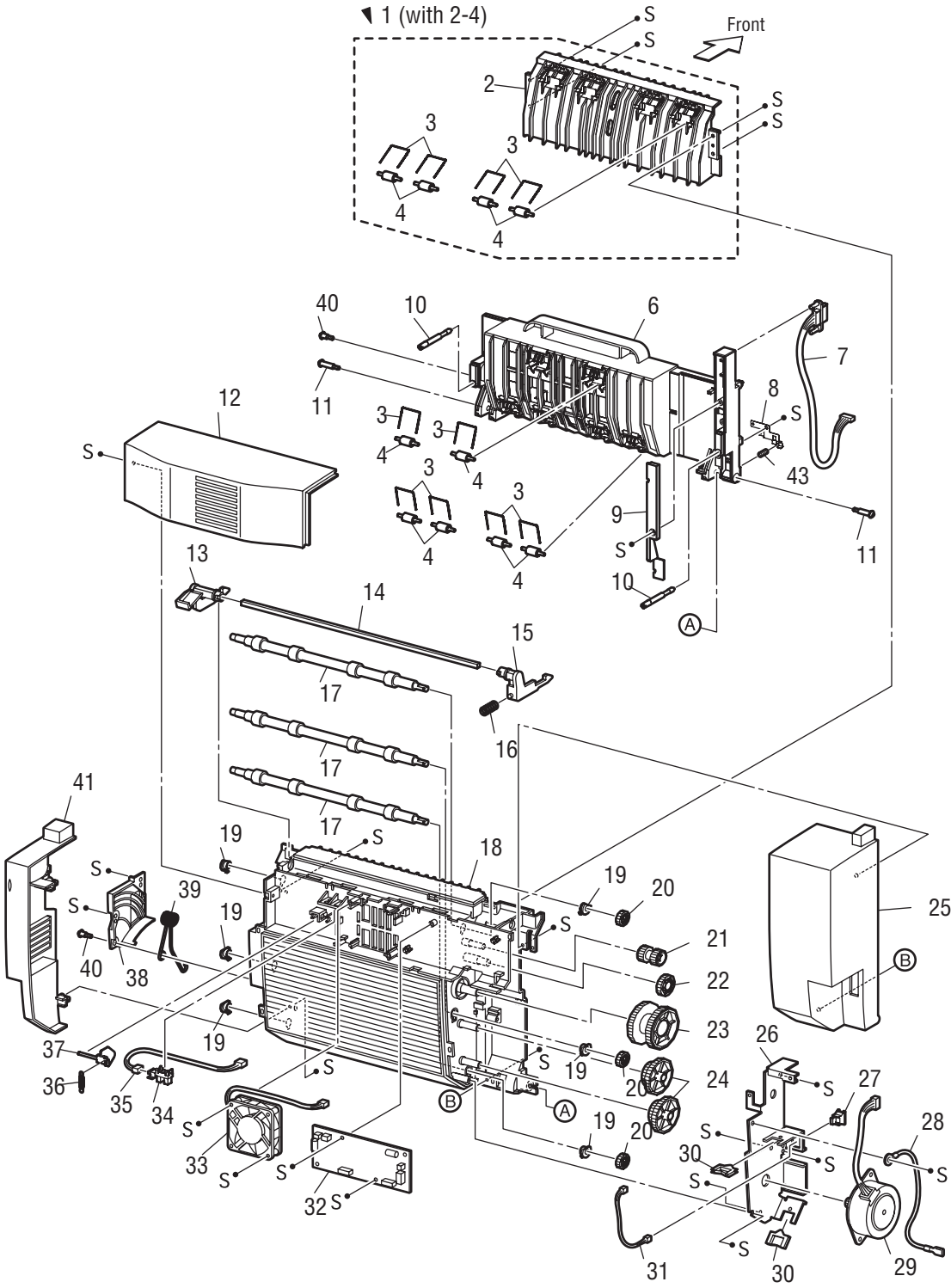
No.	Name/Description	Part Number
1	COVER CST	802E47191
2	ROLL ASSY RETARD (part of 99)	
3	FRICTION CLUTCH	
4	SHAFT RETARD	
5	HOLDER RETARD	
6	SPRING RETARD	P4500: 809E37500 P4510: 809E74400
7	GEAR PB L	
8	GEAR BTM ONEWAY	
9	SHAFT PB	
10	PLATE ASSY BTM	
11	GUIDE ASSY SD L550	
12	GEAR PINION	
13	GUIDE ASSY SD R550	
15	GEAR LOCK ONEWAY	
16	HOUSING TOP 550	
17	LOCK EXTENSION	
18	SPRING BTM UP 550	
19	PLATE GEAR LOCK 550	
20	GEAR PB R	
21	RACK BTM LOCK 550	
22	COVER BTM UP 550	
23	GEAR LOCK PINION	
24	SPRING BTM LOCK	
25	GEAR BTM LOCK	
26	GEAR LEVER LOCK	
27	LEVER BTM LOCK	
28	SPRING STOPPER GEAR	
29	STOPPER GEAR	
30	PLATE SUPPORT	
31	COVER EXTENSION	
32	SUPPORT GUIDE IND	
34	GUIDE INDICATOR 1	
35	GUIDE INDICATOR 2	
36	GUIDE INDICATOR 3	
37	LOW INDICATOR	

Parts List 20.3 Optional 550-Sheet Paper Cassette (continued)

No.	Name/Description	Part Number
38	LOW IND FRONT	
39	GEAR SECTOR	
40	RACK SIZE	
41	HANDLE EXTENSION 550	
42	HOUSING EXTENSION 550	
43	GUIDE END 550	
44	HOUSING BASE 550	
45	LINK SW SIZE1-550	
46	LINK SW SIZE2-550	
47	LINK SW SIZE3-550	
48	LINK SW SIZE LOW	
50	550 PAPER CASSETTE ^a (with 1-13, 15-32, 34-48, 51-53)	P4500: 084K15416 P4510: 050K58100
51	HOLDER ASSY RETARD (with 2-5)	019K98186
52	STOPPER BASE R	
53	STOPPER BASE L	
99	Roller Kit (with 2, qty. 3)	604K19890

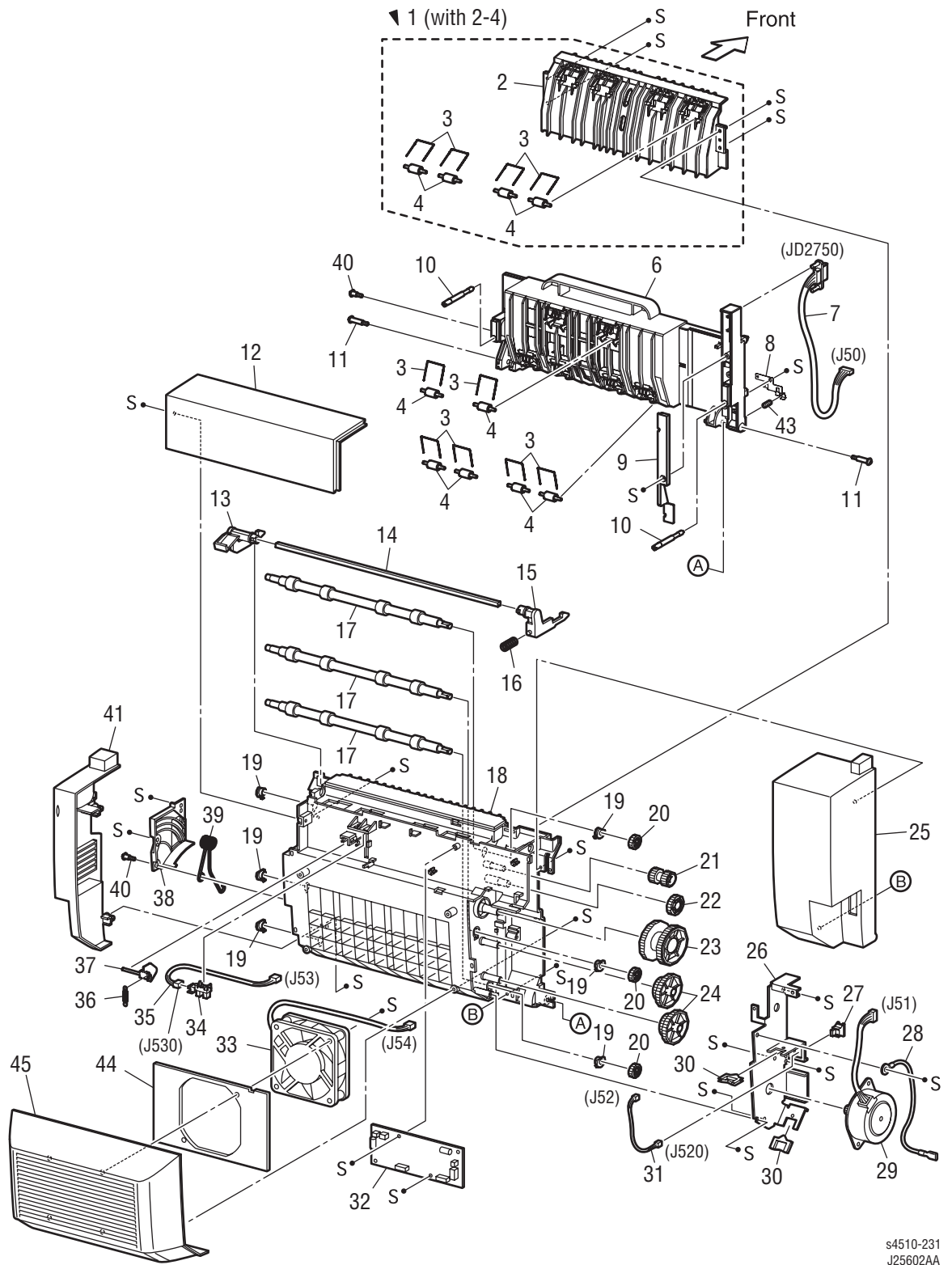
a The Phaser 4510 paper cassette is not interchangeable with the Phaser 4500 paper cassette due to the different retard spring, PL 4.1.6.

Parts List 21.1 Duplex Unit (P4500)



s4500-231
JG5602AB

Parts List 21.1 Duplex Unit (P4510)



s4510-231
J25602AA

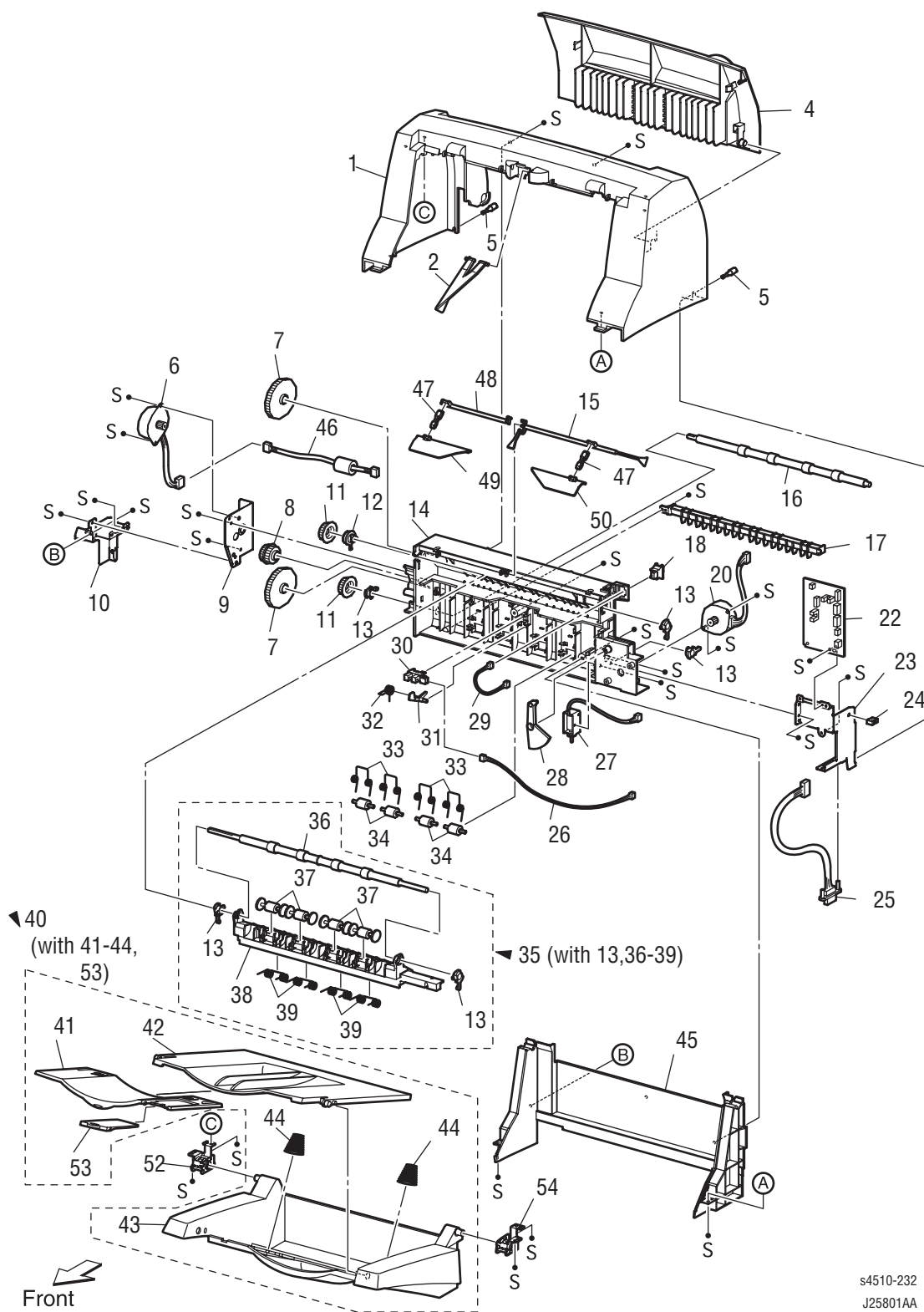
Parts List 21.1 Duplex Unit

No.	Name/Description	Part Number
1	HSG UPPER ASSY (with2-4)	802K46802
2	HSG UPPER DUP	
3	SPRING PINCH	809E37140
4	ROLL PINCH	059E97500
6	HSG LOWER DUP	P4500: 802E50613 P4510: 848E06510
7	HARNESS ASSY DUP (J50-JD2750)	
8	EARTH ASSY PLATE	
9	COVER HARNESS	
10	SCREW THUMB	
11	SCREW HINGE	
12	COVER TOP	
13	LEVER LATCH RIGHT	
14	SHAFT LATCH	
15	LEVER LATCH LEFT	
16	SPRING LATCH	
17	ROLLER DUP	059E97811
18	COVER HSG DUP	
19	BEARING DUP	013E22671
20	GEAR ROLLER	
21	GEAR IDLE29	
22	GEAR IDLE47	
23	GEAR IDLE77	
24	GEAR IDLE57/37	
25	COVER LEFT	
26	BRACKET MOTOR	
27	SWITCH DUPLEX (P520)	110E10200
28	HARNESS ASSY DUP EARTH (J56-JD560)	
29	MOTOR DUPLEX (J51)	127E83202
30	CLAMP EDGE	

Parts List 21.1 Duplex Unit (continued)

No.	Name/Description	Part Number
31	HARNESS ASSY DUP COVER (J52-J520)	
32	PWBA DUPLEX	P4500: 160K86757 P4510: 960K28791
33	FAN DUPLEX (J54)	P4500: 127E83210 P4510: 127E85210
34	SENSOR DUP (P530)	130E87090
35	HARNESS ASSY DUP SNR (J53-J530)	
36	SPRING ACTUATOR	809E50961
37	ACTUATOR DUP	604K16750
38	COVER DAMPER	
39	SPRING DAMPER	
40	SCREW TAPPING	
41	COVER RIGHT	
43	SPRING Frame Ground DUP	
99	DUPLEX ASSY (ENTIRE UNIT)	P4500: 084K18297 P4510: 084K25791

Parts List 23.1 Stacker



Parts List 23.1 Stacker

No.	Name/Description	Part Number
1	COVER OCT (with 3) (stacker cover)	604K15645
2	WEIGHT	036E91551
3	ELIMINATOR ASSY	
4	COVER REAR	
5	SCREW THUMB	
6	MOTOR ASSY OCT (J71) (stacker motor assembly)	127K39351
7	GEAR 45	007E74830
8	GEAR 19/37	007E74840
9	BRACKET MOTOR OCT (stacker motor bracket)	
10	SUPPORT OCT LEFT (left stacker support)	
11	GEAR 19	007E74821
12	BEARING OFFSET	013E22030
13	BEARING ROLL	013E22021
14	HOUSING OCT (stacker housing)	
15	ACTUATOR FULL STACK	120E21663
16	ROLL OCT LOWER (lower stacker roller)	059K25121
17	CHUTE INLET	
18	S/W REAR COVER (P740)	110E10200
20	MOTOR ASSY OFFSET (J72)	127K39341
22	PWBA OCT (stacker PWBA)	160K86745
23	SUPPORT OCT RIGHT (right stacker support)	
24	CLAMP MINI	
25	HARNESS ASSY OCT 2 (J70-JD3070) (stacker harness 2)	
26	HARNESS ASSY OCT SNR (J73-J730) (stacker sensor harness)	
27	SOLENOID ASSY GATE (J75)	121K28672
28	GEAR CAM	007E74810
29	HARNESS ASSY REAR COVER (J74-J740)	
30	SENSOR OCT (P730) (stacker sensor)	930W00113
31	ACTUATOR OCT (stacker actuator)	120E21270
32	SPRING ACTUATOR	809E37332
33	SPRING PINCH	809E37341
34	ROLL PINCH	059E97541
35	CHUTE OFFSET ASSY (with 13, 36-39)	054K23313
36	ROLL OCT UPPER (Upper stacker roller)	

Parts List 23.1 Stacker (continued)

No.	Name/Description	Part Number
37	ROLL PINCH OCT (stacker pinch roller)	
38	CHUTE OFFSET	
39	SPRING PINCH EXIT	
40	TRAY ASSY OCT (with 41-44, 53) (stacker tray assembly)	050K49267
41	TRAY EXTENSION	
42	TRAY EXIT	
43	TRAY BASE	
44	SPRING TRAY	
45	COVER FRONT	
46	HARNESS ASSY OCT MOT (J71-P710) (stacker motor harness)	
47	LINK (Qty. 2)	012E11500
48	SHAFT FULL STACK	006E79380
49	FLAPPER ASSY L (with 47)	036K91583
50	FLAPPER ASSY R (with 47)	036K91593
51	SPRING	
52	DAMPER ASSY TRAY L	004K02070
53	STOPPER	
54	DAMPER ASSY TRAY R	004K02080
99	STACKER ASSY (ENTIRE UNIT)	084K18117

Xerox Supplies and Accessories

Repair Kits, World Kits and Repacking Kits

Description	Part Number
World Kit Installation Guide Quick User Guides (Qty. 4) Software and Documentation CD-ROM and pocket Registration Cards (Qty. 2) Warranty Booklet	P4500: 650K27170 P4510: 650K27470
Repack Kit	P4500: 065-0633-00 P4510: 695K23110
Hardware Kit	604K16421

Power Cords

Description	Part Number
Cable PWR NA, 125V, 10A	117E29520
Cable PWR EURO 220V, 99L	117E29500
Cable PWR AUST 240 V, 96L	117E29490
Cable Assy SWISS 220/240 V, 50Hz	117E35050
Cable Assy PWR. DANISH, 250 V	117E29460
Cable Assy PWR, CHINA	117E35030
Power, 240V, ARGENTINA	117E35040
Cable PWR U.K. 240 V, 96L	117E29510

Upgrade Kits and Options

Description	Option Part Number	FRU Part Number
64 MB memory option	P4500: 097S03122 P4510: NS	P4500: 133K27720 P4510: NS
128 MB memory option	P4500: 097S03123 P4510: 097S03776	P4500: 137E24210 P4510: 133K27760
256 MB memory option	P4500: NS P4510: 097S03777	P4500: NS P4510: 237E24070
Flash memory module, P4500: 16MB; P4510: 20MB	P4500: 097S03125 P4510: 097S03778	P4500: 237E23840 P4510: 237E24090
Hard drive option	P4500: 097S03126 P4510: 097S03779	P4500: 121K45130 P4510: 121K45280
B TO N Upgrade option configuration card	P4500: 097S03146 P4510: 097S03623	P4500: 069E00450 P4510: 069E00530

Upgrade Kits and Options (continued)

Description	Option Part Number	FRU Part Number
Base Model configuration card	NS	P4500: 069E00440 P4510: 069E00540
550-sheet feeder ^a	P4500: 097S03715 P4510: 097S03624	P4500: 084K24570 P4510: 084K25804
Duplex unit	P4500: 097S03713 P4510: 097S03625	P4500: 084K18297 P4510: 084K25791
500-sheet stacker with job offset	097S03764	084K18117
150-sheet replacement paper tray ^b	P4500: 109R00734 P4510: NS	P4500: 084K15355 P4510: 050K58090
550-sheet replacement paper tray	P4500: 109R00721 P4510: NS	P4500: 084K15416 P4510: 050K58100

a The 550-sheet feeder option includes the paper cassette; the 550-sheet feeder FRU does not.

b The Phaser 4510 150- and 550-sheet paper trays look identical to the Phaser 4500 paper trays and will fit into a Phaser 4500 printer, but might not function correctly. Consequently, the paper trays are not considered to be interchangeable and carry different part numbers.

Consumables

Description	Part Number
Standard-capacity print cartridge (10K)	P4500: 113R00656 P4510: 113R00711
High-capacity print cartridge (18K P4500 19K P4510)	P4500: 113R00657 P4510: 113R00712
Page Pack print cartridge	P4500: 113R00703 P4510: 113R00715

Routine Maintenance Items

Description	Part Number
Maintenance kit, 110 V	P4500: 108R00600 P4510: 108R00717
Maintenance kit, 220 V	P4500: 108R00601 P4510: 108R00718

Service Manual

Description	Part Number
Service Manual, Phaser 4500/4510	701P45760